



**CHURCHLANDS  
SENIOR HIGH SCHOOL**

# Churchlands Bytes

Tuesday 4 March 2025 - Circulated Fortnightly Issue: 2 (2025)

## News in Brief

### Important Email Communications from Churchlands Senior High School

In our efforts to ensure you receive all important communications from Churchlands SHS, we recently have observed that some domains, including TPG, iiNet, Bigpond, Hotmail, and Westnet, may not always reliably accept emails from the school.

If you use one of these providers and notice delays or missing emails, you may wish to update your contact details with an alternative industry standard email address for a more consistent experience. You can do this by logging into the <https://churchlands.paperlyapp.com/public/parents/login> or by reaching out to the school administration at [enquiries@churchlands.wa.edu.au](mailto:enquiries@churchlands.wa.edu.au) or by phone.

Keeping your contact details up to date helps ensure you stay informed about key school updates.

Thank you for your attention to this matter.

### Changes to Academic Excellence Awards

Starting this year, there has been an update to the way certificates for Academic Excellence are awarded.

In the past, students received certificates based on the number of "A" grades they achieved. To qualify for an award, students were required to earn "A" grades in all MESH subjects.

The process has now been revised to include the calculation of a Grade Point Average (GPA), with subjects weighted. The GPA is calculated at the end of each reporting cycle. To qualify for a Certificate of Academic Excellence, a student must achieve a GPA of 3.50 or higher.

### HASS in the Spotlight

The Humanities and Social Sciences Department would like to congratulate their teachers and the Year 12 students who achieved outstanding results last year in WACE.

Five subjects shone having the highest performing students in WACE 2024, including Politics and Law, Business Management and Enterprise, Modern History, Philosophy and Ethics, and Economics. HASS also had two students take out the Exhibition Awards achieving the highest results in the state. These students were Cas Bouwer in Philosophy & Ethics and Christopher Chang in Business Management and Enterprise.

Over the last two years every HASS subject can be proud to say they have had the highest performing students in WACE, with some subjects such as Geography and Politics and Law achieving outstanding results year after year. Exhibition Awards have also been achieved in both of these subjects in recent years.

Teachers and students are to be acknowledged for their time, effort, dedication and hard work to achieve such remarkable results.

## What's Coming Up?

### Term 1, 2025

5 Mar	-	Year 10 Clare Easton Presentation
6 Mar	-	Photo Day: Years 8-12
7 Mar	-	Have Sum Fun: Year 11 & 12 (7.00pm)
10 Mar	-	MPC 7.00pm
10-11 Mar	-	OLNA Year 11 & 12 Reading and Numeracy
12 Mar	-	OLNA Year 11 & 12 Catch Up
12-17 Mar	-	NAPLAN Year 7 & 9
14 Mar	-	Have Sum Fun: Years 7-10 (7.00pm)
17-21 Mar	-	Harmony Week
18 Mar	-	Meet the Instrumental Music Teacher Night

## Staff Changes For The Remainder of Term 1

For the remainder of the term please note the following staffing changes:



Kate Grayson  
Principal



Paul Siwek  
Associate Principal  
Junior Secondary



Glenn Robinson  
Program Coordinator  
Head of Year 7



Jess Van de Ploeg  
Head of Learning Area -  
Music



**CHURCHLANDS  
SENIOR HIGH SCHOOL**

# Churchlands Bytes

## Friday Morning Maths Help for Year 10 & 11

If you would benefit from some extra help with your Maths, come along to M8 on Friday mornings from 8.00am, where Mrs Grubelich will be available to help with any homework you need clarification on or questions you didn't get answered in class.

## Maths Digital E-Resource (Year 7 to 10)

If you have not yet paid for your Maths digital E-resource, which provides access to Mathspace for 2025, you still have time to pay that by going to <https://campion.com.au/> and selecting "Parents Order Here" in the top right.

## ATAR Mathematics Online Courses

If you are currently enrolled in ATAR Mathematics Applications, Methods, or Specialist, you might find the video series available at The Tuition Centre helpful! From ClassPad tutorials to thorough WACE exam reviews, these courses provide an excellent way to develop essential skills in these courses. The costs of these courses range from \$3 to \$5, and can be purchased directly from <https://thetuitioncentre.com.au/>

## Year 10 Bstreetsmart

The Year 10 students have an opportunity to attend an event called RAC Streetsmart which is about educating future young drivers. This links to the Learner Driver content of the Year 10 Health program, Keys for Life.

All Year 10 parents should have received an email outlining the details of the excursion including registering your child's participation through Paperly. If you have not received the email please check your junk mail. Numbers are capped and registration closes on Monday 17 March.

## Claire Eaton Presentation

The Year 10 students have a guest speaker visiting on Wednesday to talk to the about 'Handling Change, Challenges and Setbacks'.

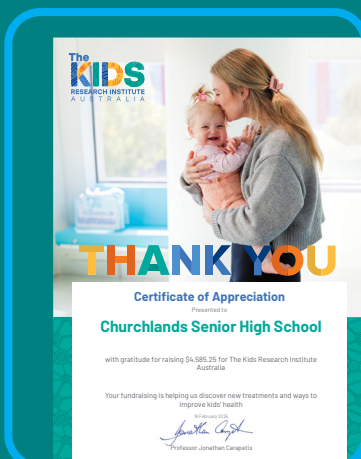
Claire will share practical and teen-friendly and prevention-focused wellbeing tools to enhance helpful thinking, balance big emotions and handle life's inevitable curve balls.

You can find out more about Claire's work here at [ClaireEaton.com.au](http://ClaireEaton.com.au)

## Funds Raised by the 2024 Year 7 and 8 Fun Run

The Year 7 and 8 Cohort of 2024 received a Certificate of Appreciation from The Kids Research Institute Australia for raising \$4,585.25.

The monies raised will go towards discovering new treatments and ways to improve kids' health.



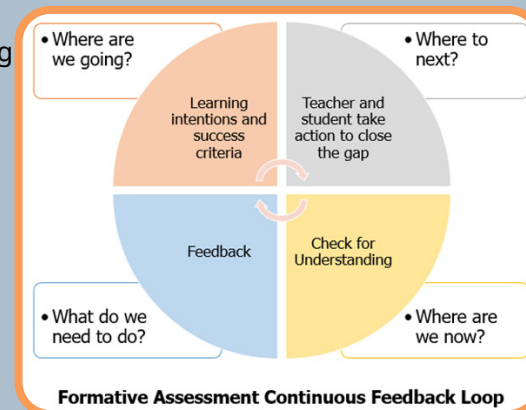
## Formative Assessment - The Continuous Feedback Loop -

Formative assessment is an ongoing cycle that helps students understand their learning progress and take action to improve. The Continuous Feedback Loop (see image) highlights four key steps:

- Learning Intentions & Success Criteria – Clearly defining where we are going gives students a roadmap for success.
- Check for Understanding – Ongoing checks ensure students and teachers know where learning is at right now.
- Feedback – Effective feedback focuses on what needs to happen next to bridge the gap between current understanding and learning goals.
- Taking Action – Students use feedback to refine their understanding and move forward in their learning.

By continuously cycling through these steps, formative assessment helps students take ownership of their learning, builds confidence, and ensures teaching is responsive to student needs.

Would you like to explore how to implement this in your classroom? Stay tuned for more insights in upcoming Formative Assessment Bytes.



## Churchlands.Paperlyapp.com - How To Instructions -

To assist parents and guardians with our new payment platform, we have sent an email today with two attachments:

1. How To Pay - Contributions & Charges
2. How to Approve - Excursions

Please check your email and junk email folders for this information.

## 2025 Secondary Assistance Scheme

Secondary Assistance applications must be claimed by Friday 11 April 2025. A current Health Care Card must be presented.

The Application Form and Instructions can be found on our website. Please click on the following link;

<https://www.churchlands.wa.edu.au/finances/secondary-assistance-scheme-application>

or alternatively forms are available from the Main Administration.



**CHURCHLANDS**  
SENIOR HIGH SCHOOL

# Churchlands Bytes

## Learning Support Team

The Learning Support Team is dedicated to assisting students with diverse learning needs by compiling diagnoses, exploring potential diagnoses, and developing effective strategies to support their educational journey.

We work closely with teachers, families and specialists to ensure each student receives the tailored support they need to thrive at Churchlands Senior High School. Our goal is to create an inclusive learning experience that fosters growth, confidence and success for every student.

Please don't hesitate to contact a member of our team if you have any concerns about your child.



**Claire Shoebridge**  
Learning Support Program Coordinator  
cshoebridge@churchlands.wa.edu.au



**Jane Price**  
Learning Support Coordinator  
Year 10-12  
jprice@churchlands.wa.edu.au



**Kate Murray**  
Learning Support Coordinator Year 7-9  
kmurray@churchlands.wa.edu.au



**Nat Eaton**  
ASDAN and Modified Curriculum  
neaton@churchlands.wa.edu.au



**David Cox**  
Year 12 SCSA applications  
d.cox@churchlands.wa.edu.au



**Amy Williams**  
Learning Support Administration  
awilliams@churchlands.wa.edu.au

## Library

The term is well underway in our school library.

We have students making great use of our glass top table to write inspirational messages, study time in our new booths.

Student helpers have been making items for our displays for the Western Australian Young Readers Book Awards (WAYRBA) competition that will be starting next term as well as our MakerSpace participants.



Year 7 students coming in for their reading time have been doing a scavenger hunt to check out all what the library has and borrowing loads of books.

We even had our first book club session.

Keep eyes out for when the Premiers Reading Challenge starts!





CHURCHLANDS SENIOR HIGH SCHOOL

# Churchlands Bytes

FOR YOUTH WEEK WA  
MENS TALK • KAI-FELLA • LIVID  
PROUDLY PRESENT

**OUR THREADS, THIS PLACE, YOUR MOMENT**  
*A Celebration of Boys and Men in the*

# ARTS

<b>ART EXHIBITION</b> APRIL 11	<b>SUNDAY SESH MUSIC NIGHT</b> APRIL 13	<b>A NIGHT ON STAGE</b> APRIL 14
<b>STILL SHOTS PHOTOGRAPHY SHOW</b> APRIL 15	<b>SHORT FILM FESTIVAL</b> APRIL 16	

IF YOU ARE A YOUNG MALE BETWEEN THE AGES OF 12-25YRS AND WOULD LIKE TO PRESENT, PERFORM, DISPLAY, OR SHOW OFF YOUR ARTISTIC TALENT IN ONE OF OUR YOUTH WEEK WA EVENTS, WE WANT TO HEAR FROM YOU.

SCAN THE QR CODE BELOW TO REGISTER YOUR INTEREST.







## Important

Drop Off and Pick Up Reminders



Parking around the school can become quite congested. For the safety of your children and our staff, please see below for safer drop off and pick up:

**Sports Hall** - STAFF ONLY  
**Front Main Administration:** STAFF with some Visitor parking (not suitable for drop off/pick up).

**Memory Close:** STAFF & Student 'P' Platers ONLY  
For parents wanting to drop off/pick up students, please use the either Hale Road Drop & Ride near the tennis courts or Lucca Street (please be mindful of other students and buses when entering/exiting).

## Lost Property

We're only five weeks into Term 1 and the accumulation of lost property has started.

If your child has lost or misplaced any articles, please have them come to the table in the corridor outside Student Services Middle Secondary.

Any lost uniforms that are named will be returned to students. at the end of the term, all other items will either go to charity or be binned, depending on condition.

The Lost Property table will be cleared at the end of the last day of school.

Thank You.





## Public Transport Etiquette for Churchlands Senior High School Students

Please remind your young person the etiquette when using public transport:

- Give up your seat for an elderly person, or someone with a disability, or a parent with a baby and pram.
- Students must stand up for adults.
- Be nice to your fellow passengers.
- Be patient, don't push to get on or off. Wait until all passenger have exited before getting on.

Embrace the Churchlands value of Social Responsibility, be community minded and show respect.

# Churchlands Bytes



CHURCHLANDS  
SENIOR HIGH SCHOOL



CHURCHLANDS  
SENIOR HIGH SCHOOL

*Churchlands School of Music*

*presents*



## Twilight Jazz



**Friday 28<sup>th</sup> March 2025**

**6:00pm – 9:00pm**

**Family and friends, please join us for a fabulous night of swinging jazz proudly presented by the Churchlands jazz community.**

**Please bring a picnic, relax and enjoy the music whilst supporting our fundraising initiatives.**

**Grazing boxes will once again be available to preorder.  
Please remember to drink responsibly if consuming alcohol.**

# Family and Community Engagement

## CHURCHLANDS BEFORE SCHOOL CLUBS



## CHURCHLANDS AFTER SCHOOL CLUBS

### Good Start Breaky Club

What: Toasties and Milo  
Where: Food 1 - outside  
When: Tues & Fri @ 8.15am  
Who: Chaplain's & Comm Service Students



### Running Club

What: Morning run club  
Where: Gym Foyer  
When: Wednesdays 8-9am  
Who: Gina Grayson



### Japanese Language Club

What: Conversation and culture  
Where: M5  
When: Thursdays 3-3.45pm  
Who: Lee Ellis



### Volleyball Club



What: Volleyball comp  
Where: Gym  
When: Mondays 3-4pm  
Who: PE staff

### Girls Strength Club

What: Weights training  
Where: Gym (near pool)  
When: Thursdays 8am  
Who: Meg Howard



### STEM Club

What: STEM activities  
Where: STEM building  
When: Mondays 3-4pm  
Who: Grant Pusey



### Follow the Dream

What: For Aboriginal students  
Where: B2  
When: Mondays 3-4.15pm  
Who: Rochelle Coleman & Kat Mosele



### Badminton Club

What: Badminton games  
Where: Gym  
When: Thursdays 3-4pm  
Who: PE staff



### Homework Club

What: Homework assistance  
Where: Library  
When: Monday 3-4pm  
Who: Library Staff



## CHURCHLANDS LUNCH CLUBS



### Heads Up Club

What: Games - student led  
Where: F activity  
When: Mon, Tue, Wed, Fri - Break 1  
Who: Learning Support Staff



### Friday Beatz

What: Learn how to DJ  
Where: B2  
When: Friday Break 1  
Who: Ms Sandra Boujos



### Containers for Change

What: Collect Containers  
Where: Various locations  
When: Friday Form  
Who: Jarrad Carlson & Leah Anthony



### Paper Recycle

What: Recycling paper bins  
Where: Various  
When: Friday Form  
Who: Tom Wilson



### Youth Diversity Club

What: Safe Space for LGBTQI+  
Where: Science 11  
When: Wednesday - Break 1  
Who: Kat Mosele & Mrs McFarlane



### Gardening & Environment

What: All things gardening & Enviro  
Where: Science 3  
When: Friday Break 1  
Who: Science Staff



### Creative Writing Room

What: Creative Writing fun  
Where: C1  
When: Tuesday Break 1  
Who: Anya Seabourne



### French Conversation Club

What: Come Chat in French  
Where: Math's Activity area  
When: Friday Break 1 @ 11.10am  
Who: Veruschka Pestano



### Maker Space

What: Come get crafty  
Where: Library  
When: Thursday Break 1 & 2  
Who: Library staff



### Book Club

What: Book club  
Where: Library  
When: Friday Break 2  
Who: Library Staff  
Weeks 3, 5, 7 and 9



### Trees for Survival

What: Help grow seedlings  
Where: Shadehouse Auditorium  
When: Friday - Break 1  
Who: James Bell



### Chess Club

What: Chess club  
Where: M Activity  
When: Thursdays Break 1  
Who: Mr Nguyen & Mr Timur



### Boardgame Club

What: Boardgames  
Where: Media 1  
When: Thursdays - Break 1  
Who: Doug Cox



### Year 7 & 8 Photography Club

What: Photography  
Where: Photo 1  
When: Thursday - Break 1  
Who: Eric Turner



### Composition Club

What: Music Composing  
Where: OP3  
When: Thursday - Break 1  
Who: Tim Newhouse



# Family and Community Engagement

**RU HANGRY** 8.15-9AM  
**EVERY TUE & FRI** & MILO  
**BREAKFAST!** TOASTIES



CHURCHLANDS SENIOR HIGH SCHOOL

FREE FOOD! FREE FOOD! FREE FOOD!

**FOOD 1**  
COURTYARD

MUSIC GAMES +  
A GOOD START TO YOUR DAY!  
ALL WELCOME

WESTERN AUSTRALIA'S LEADING TUITION AND EXAM PREPARATION EXPERTS

**Early Bird SAVE 10%**

Enrol with full payment by Monday 24th March 2025



**APRIL HOLIDAY**  
SKILLS DEVELOPMENT COURSES

6 Hours (3 hours a day over 2 days) **Yr 7-10**

Shape your future with the right skills and knowledge

VENUES: All Saints' College and Perth Modern School

@ ACADEMICGROUP.COM.AU



ACADEMIC TASK FORCE  
Achieve Success at School

**Enrol Today**

WESTERN AUSTRALIA'S LEADING TUITION AND EXAM PREPARATION EXPERTS

**Early Bird SAVE 10%**

Enrol with full payment by Monday 24th March 2025



**APRIL ATAR REVISION**  
COURSES **Yr 11-12**

6 Hours (3 hours a day over 2 days)

Enhance Your Learning, Improve Your ATAR

VENUES: All Saints' College, Churchlands SHS, Perth Modern School & Online

@ ACADEMICGROUP.COM.AU



ACADEMIC TASK FORCE  
Achieve Success at School

**Enrol Today**

## --- Second-hand Textbooks and Uniform ---

We have partnered with Sustainable School Shop to provide families access to second-hand textbooks, uniforms, calculators, musical instruments, sports gear and much more!

Sustainable School Shop have preloaded items specific to our school onto their site. This makes it super easy to list your items for sale and to buy items.

See all the second-hand uniform items for sale here:  
<https://www.sustainableschoolshop.com.au/stocktake/churchlands-senior-high-school>

See all the second-hand textbooks for sale here:  
<https://www.sustainableschoolshop.com.au/booklist/churchlands-senior-high-school>

So jump onto the site, register and list your items for sale, you will be:

- reusing items rather than adding to landfill
- making money on items you sell
- saving money on items you buy
- providing another family in our school with cheaper items
- helping to create a culture of contact amongst our school community families!

Login or Register here:

<https://www.sustainableschoolshop.com.au>



SUSTAINABLE SCHOOL SHOP

Buy and sell second-hand textbooks and uniforms  
[www.SustainableSchoolShop.com.au](http://www.SustainableSchoolShop.com.au)

# Family and Community Engagement

## ▶ ClickView Parent Info Guide



### How can ClickView support your child's learning?

ClickView provides teachers and students access to thousands of interactive videos and related resources to support learning and teaching. All ClickView produced content is developed with subject experts, ensuring it's age appropriate and aligned to the Australian Curriculum.



#### High-quality resources for learning

ClickView provides a library of video content explicitly aligned to the curriculum. Students and teachers can confidently access high-quality video resources that have been purpose-made in Melbourne, or educationally curated from a selection of pay-TV or free-to-air programs.



#### Engaging and interactive

Teachers can find, edit and share relevant educational videos with students, including interactive learning tasks, through which teachers can monitor each student's understanding. Students can upload and share their work with teachers and other students to demonstrate their learning.



#### Access videos anytime, anywhere

Teaching staff can share clips with students to view at home so they can use class time for quality discussions, higher-order thinking and problem-solving.



#### Safe and age-appropriate

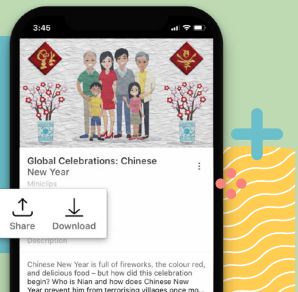
ClickView resources feature Australian content classifications to help ensure students are accessing age-appropriate materials.

### Get started with ClickView at home

1. Go to [online.clickview.com.au](https://online.clickview.com.au) on any browser or download the ClickView app.



2. Sign in using your child's school login details.
3. Browse over thousands of educational videos.



## Free Sanitary Products

All public schools that have secondary students will receive period products at no cost to the school or students.

Schools received an initial supply of products at the end of Term 1, with the full implementation of products and dispenser installation taking place during Term 2.

FREE sanitary products are available to students at Churchlands SHS. Vending machines for students to access products are located in several locations including First Aid office, Junior and Middle Secondary Student Services, Administration and A Block toilets.

## - Reminder for Students -

Students are reminded that they are still required to Sign In and Out of their respective Student Services, even if parents have notified the school of their absence.

- Thank You -

## ▶ ClickView User Guide for Secondary: Student

Sign in at [Q clickview.net](https://clickview.net)

**Home**  
A feed of all the videos and interactives sent directly to you by your teacher.

**Discover**  
Search for videos to help you with class tasks and homework.

**Activity**  
Watch your in-progress videos or complete interactives.

**Complete videos**  
Click the tick on a video or interactive to let your teacher know you've finished a task.

**Movies + TV**  
Watch the latest documentaries, films and educational TV shows.

**Playlists**  
Organise videos or save playlists that your teacher has shared with you.

**My Videos**  
Create and upload your own videos to share with your teacher.

Could Saver Plus help with your education costs?

Google

Q Saver Plus YouTube

to see our quick explainer video and find out if you're eligible.

