



CHURCHLANDS
SENIOR HIGH SCHOOL

Churchlands Bytes

Tuesday 28 May 2024 - Circulated Fortnightly

News in Brief

Dear Parents & Guardians

Churchland's Senior High School would like to thank parents for their ongoing support of our mobile phone and digital device policy.

We believe that while students are at school, mobile phones can be an unwanted distraction to learning. From when Form class starts (9am), until students leave their class at the end of the day (3pm) phones, air pods, ear phones and digital devices must remain off and away.

Students are **not** permitted to use air pods/ear phones during the day as they are connected to a mobile phone. Teachers may, during class, ask students to use headphones to access educational videos on their laptops.



If a phone/headphone/air pod is seen or heard during the school day the items will be handed to the relevant Associate Principal. The confiscated items will be returned after 3pm to the parent. A student who has their digital device (mobile phone, air pod/headphones) confiscated two times in the semester will lose their good standing, a third offence can result in suspension.

At 8:55am students are to be making their way to Form class, during this time they can be reminded to put devices away. By 9am all devices should be put away.

If you need to contact your child during the day, you can do via the main school office number, or directly through to the relevant Student Services sub school. If a student needs to contact their parents they need to seek permission from their Head of Year. If a student is unwell they need to seek support from our First Aid staff, first aid staff will then make contact with parents if the student is too unwell to stay at school.

P&C Update - Save The Date

SAVE THE DATE

Churchlands SHS Family & Community Quiz Night
24 August 2024

Contact president@churchlandspc.com.au if you'd like to be involved.



CHURCHLANDS
SENIOR HIGH SCHOOL

Parents &
Citizens
Association
Incorporated

What's Coming Up?

Term 2, 2024

- 28-31 May - Year 11 & 12 Exams
- Workplace Learning
- 29 May - CyberSafe Session 5:00-6:00pm
- Taryn Fiebig Concert Hall
- Year 8 & 9 Subject Selection Assembly (Period 2 and 3)
- 3 June - Public Holiday - WA Day
- 5 June - Year 9 Lightning Carnival
- 5- 11 Jun - Year 10 Exams
- 6 Jun - School Board Meeting
- 10-14 Jun - Year 10 into Year 11 Transition Program
- 10 Jun - Year 10 Yirra Yaakin Performance

Formative Assessment: Strategy 5

- Activating Students as Owners of Their Own Learning -

"Activating students as owners of their own learning" within the context of formative assessment is a strategy that involves students actively engaging in their educational journey, taking responsibility for their progress and learning outcomes. It emphasises student agency, self-regulation, and reflective skills, fostering a sense of ownership and empowerment in their learning process. It can take various forms, such as goal setting, self-assessment, reflection activities, and peer feedback sessions, creating a collaborative and student-centered learning environment.

Students benefit from this approach as it enhances their motivation, self-confidence, and awareness of their learning process, leading to deeper understanding and retention of knowledge. For parents, understanding this strategy involves recognising the value of student autonomy, supporting their child's development of self-regulation skills, and encouraging open communication with educators to facilitate a positive and enriching learning experience.



Listen to Dylan Williams explain strategy 4 and 5 that involve activating students in their formative assessment: https://www.youtube.com/watch?v=7PdSHCPrJIQ&ab_channel=LSI%3ALearningSciencesInternational



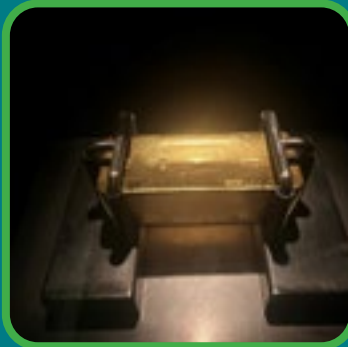
Churchlands Bytes

News in Brief *cont'd*

Year 10 Jewellery Design

Monday 20 May, our Year 10 Jewellery students were excited to participate in an unforgettable half day excursion to the Perth Mint As they explored the Mint's exhibits, they were transported back in time to an era of adventure and ambition, understanding how the discovery of gold shaped not only Western Australia's history but also the global economy!

With the help of an expert and very entertaining guide, students delved into the fascinating world of precious metals and gained an understanding of the historical and cultural significance of the oldest operating mint in Australia. From the glittering displays to hands-on experiences, this excursion ignited their curiosity and left them with lasting memories.



Year 10 Business Enterprise & Accounting

Our Year 10 BMA classes have been selling a range of different products as part of their business assessment. They have set up outside the ICT office and you can catch them at recess and lunch up until the end of Week 7.

The overall objective of the project is to make as much profit as possible and contribute to a Business Plan. Congratulations to those groups who have already made a profit. Items on sale include lollies, chocolates, stationary, cookies, vintage clothing, snacks, football jerseys, jewellery and more.

Pictured Above: Team 'Cookies & Cream' - Tara Longhurst, Cassandra Cox and Zara Stevens



Year 10 HASS Geography Excursion

During Week 5 all HASS Year 10 classes enjoyed a field work morning to the coast, which supported their studies of Geography this term. Students were immersed in field activities at Hillary's and Trigg Beach to practice their field sketches and study coastal processes that shape our beaches.

Students also looked at issues of environmental change, the impacts of climate change on our coasts and threats to urban landscapes. It is a significant challenge to get the whole year cohort out on activities like this but we felt the experience is most beneficial.

Thanks to non-HASS staff who helped supervise on the excursion throughout the week.



Community Service - HBF Run For A Reason

On Sunday 19 May, as part of the Community Service Program, 34 students volunteered at the HBF "Run for a Reason". Our students were based in the aid station in the finish precinct at Gloucester Park. They started at 6:45am and finished at 11:45am. They gave out fruit and drinks to the 25,000 runners on the day. It was a great effort by all. Special thank you to the teachers, his partner and also the lovely parent replacing a student who helped Mrs K on the day. Well done everyone.





Churchlands Bytes

News in Brief *cont'd*

IDAHOBIT Day

We went rainbow to celebrate IDAHOBIT Day on Thursday and Friday. This year with all staff and students encouraged to wear something rainbow. We raised the pride flag and had an informative PA announcement from our Youth Diversity Club students. As they do every year the Library had a beautiful book display. Churchlands SHS student Youth Diversity Club meet every Monday to cater a safe and inclusive space for every member of our school community.



I Stand Against LGBTQIA+ Discrimination.

May 17 is the International Day Against LGBTQIA+ Discrimination

IDAHOBIT

FREE DRESS DAY FRIDAY 28 June 2024 - Indigenous Literacy Foundation -

To celebrate the culmination of NAIDOC WEEK, Churchlands SHS will be having a Free Dress Day on the last day of term to raise funds for the Indigenous Literacy Foundation. The Foundation is a Community-led charity that supplies culturally relevant books and resources to remote communities. These resources include programs to support the Communities to create and publish their stories in languages of their choice. Students who choose to wear free dress to support this cause are encouraged to donate a gold coin which will be collected during Form time.



Attention all CSHS Students & Families

We have an exciting opportunity awaiting you. We are currently in urgent need of students (Year 9 and above) and their families to host our visiting students from Akashi Nishi sister school during their visit to Churchlands SHS from 3-12 August. By hosting, you not only extend your hospitality but also get the chance to immerse yourself in a cultural exchange. Host students will be treated to a fun day excursion in Fremantle and an unforgettable overnight camp experience in Bickley.



If you're ready for an adventure, eager to share Australian culture and your way of life, and have a spare bed to offer, we invite you to pick up an Expression of Interest form from the Languages office. Please return the form ASAP to secure your spot. If you have any questions, please contact Lee Ellis at: lellis@churchlands.wa.edu.au

Congratulations & Good Luck

- Congratulations to Jordannah Fautleroy (Year 12) for qualifying for the 2024 State Squad for Diving WA Elite Pathway, representing Western Australia at the Diving Australia National Open Championships in Adelaide this June. Good luck Jordannah.
- Congratulations to Ashley Popp (Year 12) for being selected in the School Sport WA Softball 18s Team competing in the Gold Coast from 27 July - 2 Aug. Good luck Ashley.

A reminder of contacts for parents and students when support is needed

The best first point of contact at school, in regard to your child's wellbeing, is their House Co-ordinator. The House Co-ordinator and Head of Year work closely with the School Psychologists and will pass on your requests for support where appropriate, and where the matter cannot be addressed by a House Co-ordinator, or Head of Year.

If your child is already an existing client of the School Psychologist, then please contact the psychologist via email and they will return contact with you or arrange a phone call appointment with you. Students can approach Chaplains directly for support by sending them an email.

General Mental Health:

including Anxiety, Depression, Emotional Regulation

- Kids Helpline 1800 55 1800
- Beyond Blue 1300 22 4636 www.beyondblue.org.au
- Headspace www.headspace.org.au
- Youth Focus 6266 4333 www.youthfocus.com.au
- ReachOut.com www.reachout.com.au
- QLife 1800 184 745 <https://www.qlife.org.au>

Urgent Mental Health:

including Suicide / Self Harm

- CAMHS Crisis Connect for Children and Families 1800 048 636
- Suicide Call Back Service 1300 659 467
- Your nearest Hospital Emergency Department
- Lifeline 13 11 14



Emergency Police & Ambulance (24HRS) 000



1800 RESPECT 1800 737 732



WA Women's Domestic Violence Helpline 1800 007 338



Crisis Care 1800 199 608

Family and Community Engagement

Art@Churchlands - Community Art Show 2024

Another terrific Art@Churchlands Community Art Show! Such a lovely opportunity to bring people together over some fabulous art work.

Opening night saw the 'gallery' full of people admiring the works from our WA professional, emerging and student artists. This year we had Robyn Abbott as the guest artist who's colour and joyful works set the tone for the event! Sales were excellent and we look forward to investing the funds into the school community and students.

A few thankyou's:

Thanks to the Music Parent Committee for running the Bar on Opening Night and organising our talented performers Putu Aryawan and Jaslyn Chen.

Thanks to Kate Grayson for not only facilitating the event as Principal, but also rolling her sleeves up and helping on the weekends - very much appreciated! Thanks to the School staff - the amazing admin team especially Natalie Foxton who did such a terrific job right down to the wire, and to Robyn, Kylie, Andrew, Jarrad and all those behind the scenes who just made things happen!

The Art Department - thank you for sharing your space with us! It was a joy watching the students interact with the art, what they liked and didn't, and of course what they could do better! And a special mention to Sharon Andrews for making it as easy as possible and for being so generous with her time and talents!

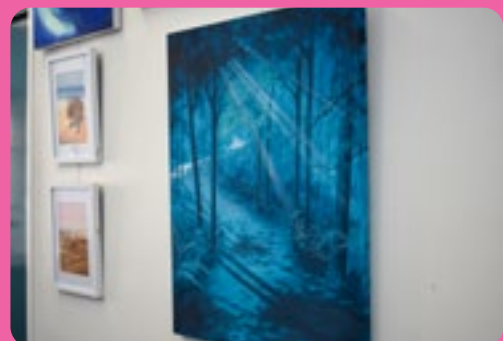
And finally a huge heartfelt thanks to the Art Committee made up of busy parents who kindly gave up weekends and evenings to organise the event and then receive and hang the art, curate and host over the weekend - Mary Sullivan, Amanda Ranford, Monique Wesley, Nikki Harvey, Alisha Lothringer, Tracey Gralton and Lindsay Back. Amazing bunch of generous people! **The Arts Committee sold about \$30,000 worth of art and raised around \$6,000 for the P&C. What a fantastic achievement!**

Thank you to the parent helpers (and partners, kids and family members who were roped in) and helped out along the week - one of the things I like most about the event is meeting other parents/carers/family, working together and having lots of laughs along the way. It's a great community we have and these events are a great way to be engaged.

Looking forward to the next one (after a bit of a rest!).

Gabriella Jerrat

ART@Churchlands Convenor
P&C President



Family and Community Engagement

We are pleased to invite you to join us for a

Cyber Safety Education Session

For Parents and Carers

29 May
5-6pm
Taryn Fiebig Concert Hall

Presented by



ySafe
Australia's leading provider of cyber safety education.



CHURCHLANDS
SENIOR HIGH SCHOOL

SAVE THE DATE

CLASS OF 1974 REUNION

OCTOBER 16, 2024 | MORNING TEA
CHURCHLANDS SENIOR HIGH SCHOOL

Free Sanitary Products

All public schools that have secondary students will receive period products at no cost to the school or students.

Schools received an initial supply of products at the end of Term 1, with the full implementation of products and dispenser installation taking place during Term 2.

FREE sanitary products are available to students at Churchlands SHS. Vending machines for students to access products are located in several locations including First Aid office, Junior and Middle Secondary Student Services, Administration and A Block toilets.

School Board Members Profiles



Sarah Hughes

I am thrilled to join the School Board and contribute to our wonderful school community. My family and I moved from northern Queensland to Perth in December 2022, and we have been warmly welcomed by the vibrant and supportive environment here.

We have two sons currently enrolled, and our daughter is set to join next year. It has been a joy to see the dedication and passion of our teachers in supporting our children's growth. The wide range of extracurricular activities offered after school is impressive and greatly appreciated by our family.

I am honoured to support both the P&C and the Board, and I am excited about the opportunity to help our school continue to thrive. Together, we can ensure that our students have access to the best possible educational experiences, fostering their development in all areas, from academics to sports, arts, and beyond.

Looking forward to collaborating with all members of the school community to achieve great things!

Family and Community Engagement

headspace Osborne Park

arts & crafts

drop-in group for ages 12-16

Every second Wednesday

4:00 pm to 6:00 pm

headspace Osborne Park

Canvas painting
Polymer clay
Friendship bracelets
Nail designs
& more



Scan the QR code or head to linktr.ee/headspaceospkgroups for more information!

SPRINTING FAST
www.sprintingfast.com.au

Tues 9th & Wed 10th July 2024

ATHLETICS CLINIC

WA ATHLETICS STADIUM, PERTH



Sarah Edmiston
Poppy Vogl
Madison Rodaj
Paul Edmiston

CHOOSE ANY 4 EVENTS PER DAY

Ages 8 - 16 from beginner to advanced

Learn in small groups with your friends

EARLY BIRD ENTRIES CLOSE 28TH JUNE


SPRINTINGFAST.COM/HOLIDAY-CLINIC

Term 2

Enrolments are now open! for

TUITION CLASSES FOR YEARS 7-12

Weekly small group tuition with qualified teachers.




Enrol Today

Term 2

Enrolments are now open! for

YEARS 10, 11 & 12 MASTER CLASSES

Weekly in-depth teaching of the syllabus by WA's top teachers to boost ATAR results.



Enrol Today

Tuesday & Friday 11AM - 1PM
July 2nd & 5th
July 9th & 12th

SCHOOL HOLIDAY SPORTS CLINIC

Youth Athletes
AGES 9-15



REGISTER HERE

\$60 PER DAY
\$80 FOR 2 DAYS
\$200 FOR 4 DAYS (SAVE \$40)

YOUTH ATHLETE DEVELOPMENT THE CLINIC

Tuesday: Strength focus, gym introduction
Friday: Speed & agility focus, mechanics

An introduction to strength & conditioning, designed for youth athletes to experience what it takes to be a professional sports person.

Providing tailored care for young athletes, our youth clinic offers specialized support to optimize performance and ensure their well-being both on and off the field.

CONTACT US

0417 94 257
www.offthefield.co
141 South Court, Osborne Park

You are invited to our brand new high performance facility.

OFF THE FIELD®