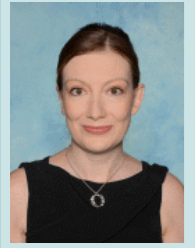




DR GENEVIEVE MCSPORRAN Board Chair and Elected Parent Member

Genevieve is passionate about the power of education to enhance young people's life choices and chances. Her student centred, strength-based approach has been informed by teaching and leadership experiences across early childhood, primary, secondary and tertiary settings. She has led the development of whole of school or institution curriculum, pastoral care and staff development policies and initiatives. Currently part of the Education team at Murdoch University, Genevieve teaches and researches in the areas of health and physical education. She has three children, with the eldest being part of the music program at Churchlands.



KATE GRAYSON School Principal

Kate commenced her career with country service teaching Visual Art at Carnarvon Senior High School before returning to Perth to Lakeland Senior High School. She quickly progressed through the ranks gaining positions as a Head of Year 12, Head of Arts, Program Coordinator - Student Services, and Deputy Principal at Canning Vale College and Cecil Andrews College. In 2016 Kate won the position of Deputy Principal - Level 4 - Human Resources at Churchlands Senior High School, before moving into the role of Associate Principal Level 5. Kate's first appointment as a Principal was at Cecil Andrews College in 2021 before gaining selection at Churchlands Senior High School in 2022 and 2024. Kate has had various roles in the Education Department including Teacher Development Coordinator-statewide, Level 3 Portfolio Assessor and member of the Curriculum Advisory Committee at SCSA for Visual Art. Kate was also heavily involved in the development of the WA curriculum, exam writer, TAFE Certificate Review Panel member, Year 12 Perspective judge and member of the Principal's Federation Committee.



MATT TURNBULL Elected Parent Member

Matt is a former Churchlands muso and was Head Boy in 1996. He is indebted for the opportunities afforded him during his time at the school and is pleased to have the chance to give back to the school community through his involvement on the Board. He is a proud dad to a Year 8, 10 and 11 at Churchlands. After high school, Matt graduated from UWA with a Bachelor of Mechanical Engineering and a bachelor of science (physics). He has enjoyed a 20 year career in the WA resources sector across a wide range of engineering, commercial and finance roles. In his current position he is responsible for communicating company strategy, financial results and governance outcomes.



LOUISE WILLIAMS Elected Parent Member

Louise is a parent of two daughters at Churchlands SHS, and joins the Board in 2022 as an elected parent member. Louise holds a Bachelor of Commerce degree and is a graduate of the Australian Institute of Company Directors. She has worked for more than 20 years in strategic Human Resources, change management, transformation and organisational development within the WA public sector including recent executive roles. She has led cultural change initiatives and the development of corporate strategy as well as implementing programs to improve diversity and inclusion outcomes. Louise is looking forward to contributing these skills and experiences to the Board.



RUSS FISHWICK JP Community Member

Russ is a member of the Churchlands Alumni and was a student at the School from 1963-67. He holds university post graduate qualifications in business and management. He has a long employment history in local government holding senior positions in metropolitan councils including acting as a chief executive officer. Russ has served three terms as Deputy Mayor at the City of Joondalup. He was Chair of the Mindarie Regional Council for 10 years. He sits on the Local Government Advisory Board and is a WA Local Government Association State Councillor. He is a Justice of the Peace and has been a member on the States Crime Prevention Council and Anti-Graffiti Task Force. Russ is a board member at the Poynter and Duncraig Primary Schools. Russ has a long history in surf life saving and is a Senior Assessor for Surf Life Saving WA.



KRIS MAINSTONE Community Member

Kris is a former student having graduated in 1993. Attending both UWA and TU Delft the Netherlands, he went on to receive a Bachelor of Environmental Design and a Bachelor of Architecture (Hon 1st Class). Kris worked locally before moving to the UK. While in London he worked on large international projects in locations such as Russia, Switzerland, The Netherlands and the UK.

Kris has taught design at UWA and Curtin and is a member of the City of Bayswater Design Panel. He is the founding director of Maine Architecture and has 20 years experience as an architect with extensive experience in master planning, residential, retail, commercial and educational sectors.



ADNAN VISRAM Community Member

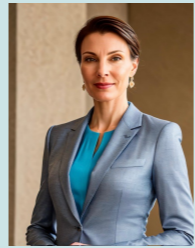
Adnan graduated from Churchlands SHS in 2008, after which he went on to obtain a double degree in law and political science/ international relations from the University of Western Australia. After this, Adnan spent two years working as a University Counsellor at an international school in Kenya, where he assisted students to obtain scholarships and admissions to leading Universities across Europe and North America. Since then, Adnan has been employed as a government lawyer, having been involved in providing legal advice, developing legislation and representing the State in a variety of Courts and Tribunals across areas such as child protection, disability services, social housing and regulatory compliance.

Adnan also sits on the Ismaili Muslim Community's Conciliation and Arbitration Board, through which he provides free mediation services to assist community members to resolve their disputes in a speedy and culturally sensitive manner.



MICHELLE PAETHORPE Community Member

Michelle is an Alumni member and attended Churchlands SHS from 1989 to 1992. Michelle is a lawyer with over 24 years experience in corporate law, corporate governance, and advising boards on risk and strategy and is currently the General Counsel and Company Secretary of an ASX listed company. Michelle has a Graduate Bachelor of Laws degree from the University of Western Australia, a Bachelor of Business Administration from Georgia College and State University in the USA and is a Graduate of the Australian Institute of Company Directors. Michelle is a former Chair of Doubleview Primary School and Board member of SportWest. Michelle currently has two sons attending Churchlands SHS.



SARAH HUGHES P&C Representative

Sarah is a former Chief Nursing Information Officer with an extensive and diverse healthcare background. She has merged clinical expertise with digital innovation to enhance healthcare delivery and education. Sarah serves as a Board member for STEM in Northern Queensland and mentors for the IMNIS Catalyst Program, within the Australian Academy of Technology Sciences and Engineering (ATSE). As an Honorary Adjunct Professor, she inspires and educates future healthcare professionals. As the P&C representative on the School Board, Sarah is dedicated to fostering environments where technological advancements and educational initiatives converge to support both students and the broader community. With a forward-thinking approach, she aims to empower others to embrace change, advocating for a future where education and technology create greater opportunities for students.



ASSOCIATE PROFESSOR DR GEOFF LUMMIS Alumni Representative

Geoff is an academic who attended Churchlands SHS from 1968 to 1972, and his connection with the school continued with his three sons. Geoff completed his initial teacher education at Churchlands Teachers' College (now ECU), completed a Master of Education from UWA, and a PhD in Sustainability from Murdoch University. Since 1986, Geoff has lectured in visual arts and science education and was a visiting professor at the University of Massachusetts (1993-1994). Geoff was the former Director of the Edith Cowan Institute for Education Research, overseeing various research initiatives in the Arts and STEM education, sustainability, creativity, and cross-curriculum studies, and has supervised over 40 higher-degree students. Geoff holds the positions of Deputy Chair of the Academic Board at ECU, Chair of Kinross College Board and is a member of the Warwick SHS Board.



HAGOP BOYADJIAN Staff Member

Hagop commenced his teaching in Europe and then moved to Perth and started teaching Mathematics at Eastern Goldfields SHS in 1992. He has worked as a Head of Learning Area in Mathematics at Como Secondary and at Churchlands SHS. Hagop then gained a position as an Associate Principal at Churchlands SHS and has been active in different roles and currently is in Middle Secondary School. Hagop is actively involved in IT and sports and also is a community board member at Lake Monger Primary School. He is looking forward to assisting the school by representing staff views on the board.



KYM LUCCHESI Staff Member

Kym has been an educator in both public and private schools for over twenty years in Western Australia and Victoria. Throughout her career she has actively engaged in professional learning to develop her practice so she is able to meet the social, emotional, and academic needs of her students. Kym's current roles at Churchlands SHS include Formative Assessment Coordinator, Think Tank Facilitator, Year 11 Brighton House Coordinator and Science Teacher. These roles illustrate Kym's motivation to share her expertise and build the capacity in others. This diversity of experience enables Kym to be an active, respected member of the Churchlands SHS community participating in the school-based Decision-making group, Curriculum Teaching & Learning Committee and Family & Community Engagement group.



PATRICK MASON-CHAMBERS School Captain

Patrick attended seven different primary schools until settling at Mt Hawthorn Primary for his last two years. He won the 2018 Dux award in Year 6 and was also a student councillor for that year. He attended Guildford Grammar for a short period of time in Year 7 before transferring to Churchlands for Year 8. Patrick has been a student councillor at Churchlands from Year 8 to Year 11 and enjoys being a part of the bigger picture. His favourite subjects at school are PE and Maths and the thing he is most looking forward to about being School Captain in 2024 is finding ways to listen to and support all students if and when they need it. Outside of school, Patrick is an avid sportsman, he has played AFL and cricket his whole life and has recently discovered his passion for playing volleyball. In the future Patrick would like to attend UWA and study a course in Zoology.



LAYLA RICHARDS School Captain

After attending Wembley Downs Primary School, Layla settled into Churchlands before eventually joining the Leadership program from Year 9 to Year 11. Apart from studying or sleeping in her spare time, she enjoys time out with her friends and family, listening to music and going on walks. She has also found joy in participating in various community service activities in and outside of school hours. At university, Layla is looking to pursue a career in finance, psychology or criminology. She is looking forward to working with other students, staff and the board to continue to develop her leadership skills.